

SPECIFICATIONS

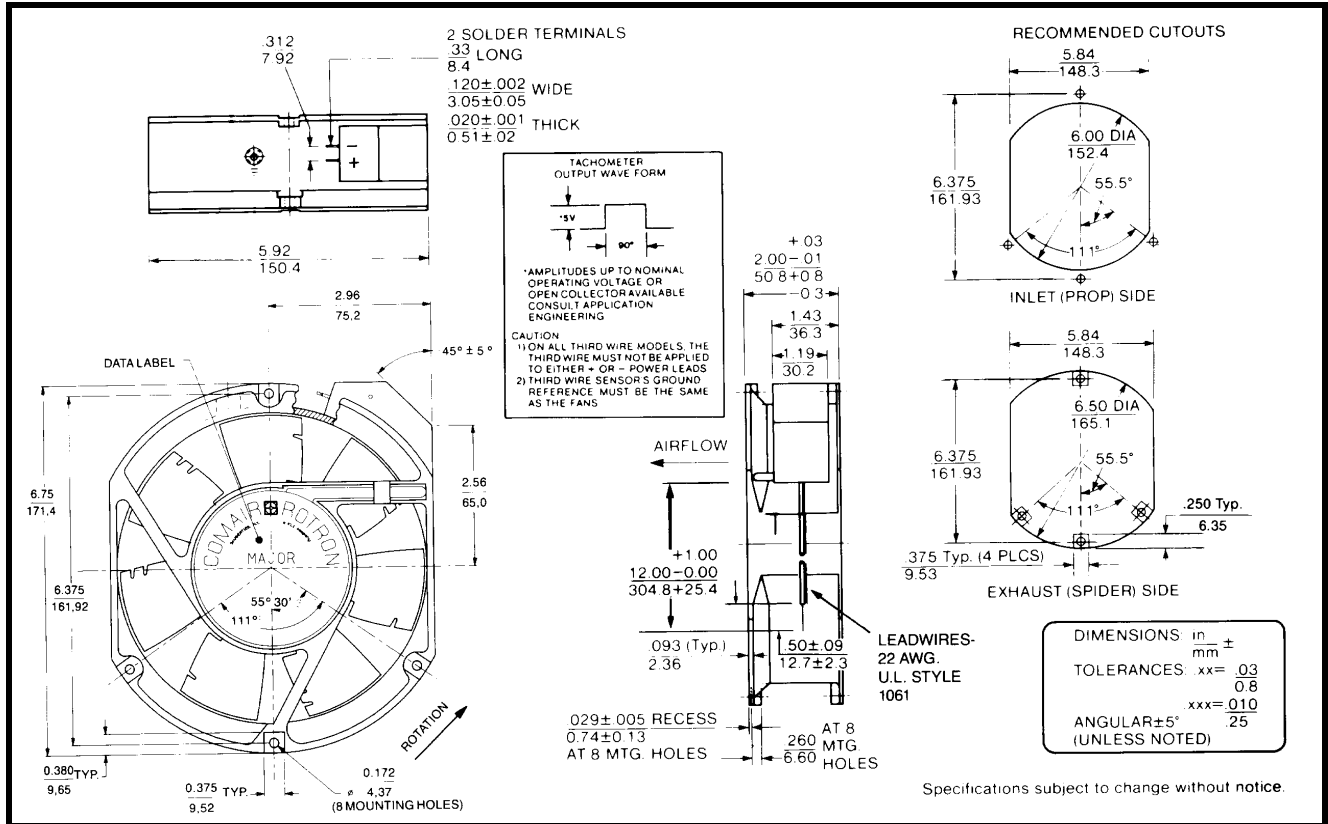
RoHS Compliant



Model Number: JQD48U3E2
Part Number: 19040422A

Rev:01
Sep 21, 2017

Mechanical Drawing:



Motor:

Nominal Voltage = 48 vdc
 Operating Voltage Range = 28 - 72 vdc
 Nominal Running Current = 0.85mps
 Locked Rotor Current = 2.0 amps
 Running Power = 40.8 watts
 Average Speed = 4830 RPM
 Bearings = Ball
 Air Flow = 332 CFM
 Acoustic = 64.0 dBA

Construction:

Venturi: Die-cast aluminum, painted black
 Propeller: Plastic, painted black

Life Expectancy:

This fan is designed for continuous duty life of 58,000 hours at 70°C.

Agency Approvals (Pending):

UL, CUL, CE

Additional Features:

Brushless DC Motor
 Soft Start Inrush Current
 Electronic Locked Rotor Protection
 Polarity Protected
 Automatic Restart Capability
 Operating Temperature: -10°C to 70°C
 Storage Temperature: -40°C to 85°C

Tachometer Specifications:

Output: Open Collector
 Ic: 60 mA. Max
 Vce: 80 vdc Max.
 Pulses per Revolution: 2
 Isolated: No

Termination:

24" Lead wires, 22 AWG, UL 1061
 Red - Power (+)
 Black - Return (-)
 Blue/White - Tachometer (Output)

PQ Curve:

